

# Engage with Strathclyde



[www.strath.ac.uk/engage](http://www.strath.ac.uk/engage)

#StrathEngage

An innovative approach  
to knowledge exchange

**Yvonne Kinnaird**

Rachel Clark

# Engage with Strathclyde

**A week-long series of events taking  
place across the University campus**

**28<sup>th</sup> April – 2<sup>nd</sup> May 2014**

[www.strath.ac.uk/engage](http://www.strath.ac.uk/engage)

# Overview



- **Why**
- **How**
- **Outcomes**
- **Benefits**
- **Challenges**
- **Way Forward**

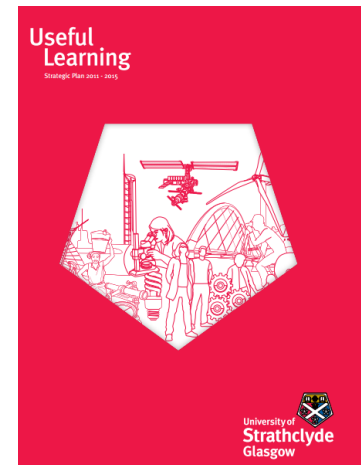
# Link to the University Strategy

- **Exemplary knowledge exchange and impact**

*Through ‘effective industry engagement and effective knowledge exchange with government and public services’*

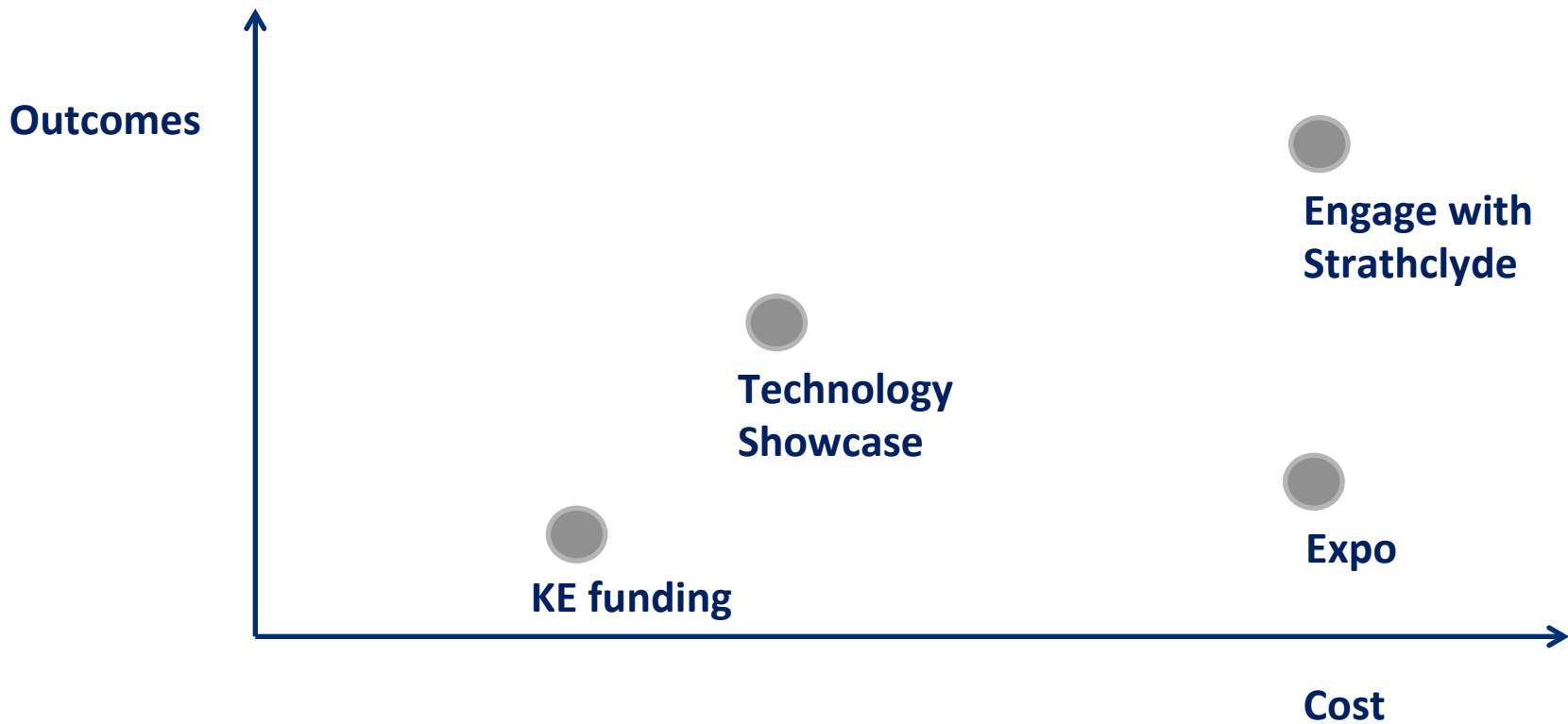
**Monitored with performance measures for:**

- **CPD**
- **Consultancy**
- **KTPs**
- **Licensing**
- **Commercialisation and Enterprise**





# Cost-Benefit Analysis

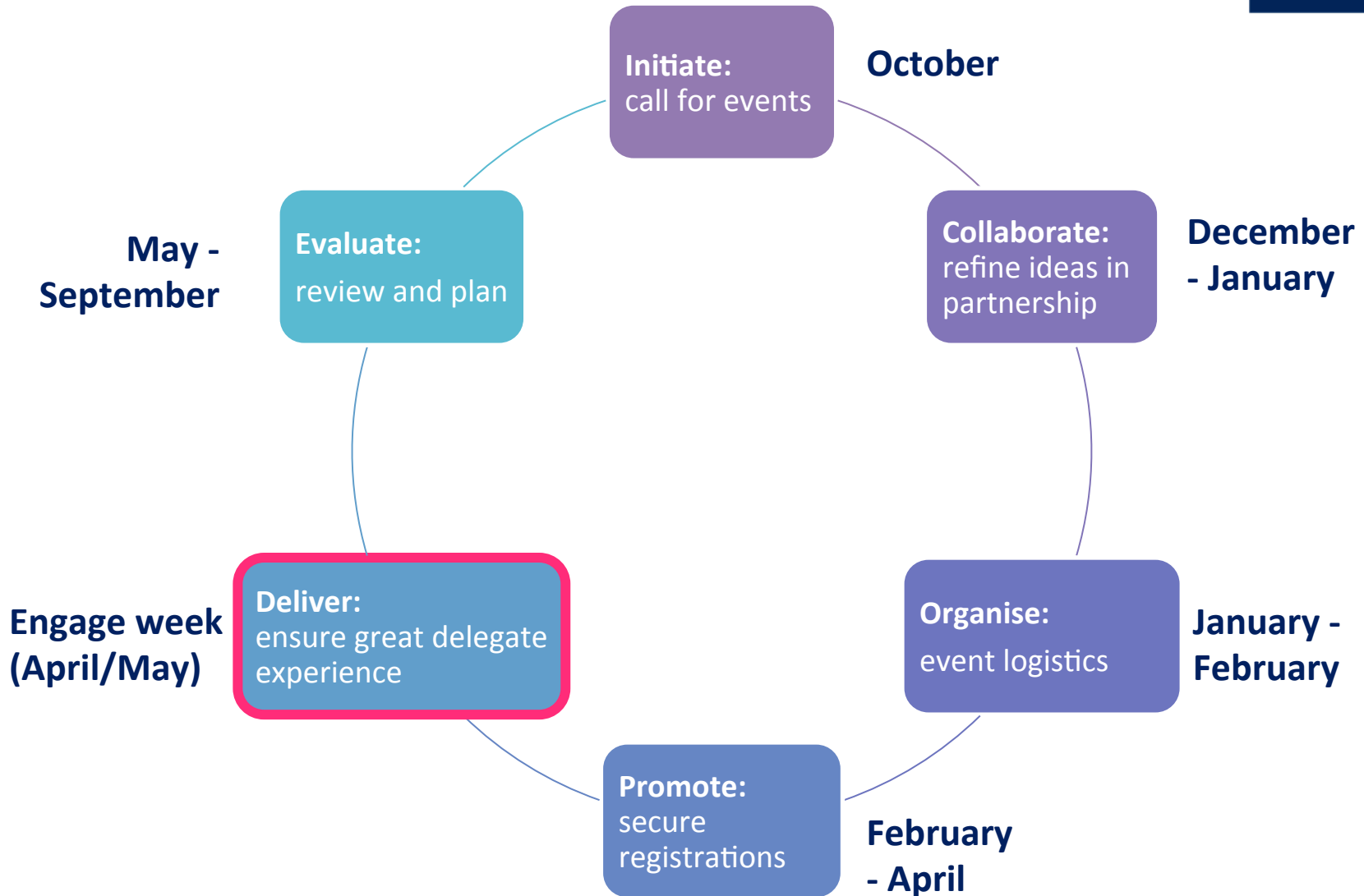


# Why?

*To **celebrate** and **strengthen** the engagement we have with **outside organisations**, and use that opportunity to **identify** and **attract new** external parties to partner with members of staff and students, to **enhance our reach and scope** of collaborative and consultative relationships*



# Timeline



# The facts

	2012	2013	2014
<b>Number of events</b>	30	40	50+
<b>No of people attending events</b>	1594	1990	
<b>Internal</b>	1009	858	
<b>External*</b>	509	1029	
<b>Not known</b>	74	103	
<b>Organisations**</b>	313	383	

\* Does not take into account same person attending two or more different events

\*\* Organisation only counted once over the week



# University of Strathclyde – Engage with Strathclyde

<http://youtu.be/AobwxHV4XIQ>

# Benefits



- Focus on one week
- Increased press profile and coverage

**Programming ensures complementary events share audiences**



**Exhibitions**













Would you like to see  
you on

TH

# Lessons Learned

- **Innovative approaches**
- Catering
- **Multi-departmental team**
- Sponsorship
- **Budget / Resources**
- Focus on objectives

# Summary

- Recognise a need for enhanced evaluation
- **Continue to review the aim in line with University strategy for KE**
- Increase in events as we approach the third year
- **You are invited to attend...**

# Latest updates – [www.strath.ac.uk/engage](http://www.strath.ac.uk/engage)



Engage with Strathclyde  
About  
Events in 2014  
Strathclyde's Children  
Exhibitions  
Images of Research  
Member Login  
Contact us

Search this site

**THE AWARDS**  
UK Entrepreneurial University  
of the Year 2013/14  
UK University of the Year  
2012/13



Home

About Strathclyde

Studying

Research

Campus Life

Visiting

A-Z Index

Contact

Home > Cross-Functional Work > Engage with Strathclyde



## Engage with Strathclyde

Engage with Strathclyde is the University's annual week-long series of events which aims to stimulate engagement with business, industry, the public and third sectors; and enhance the University of Strathclyde's collaborative partnerships.

Running from 28 April - 2 May 2014, we are hosting an exciting programme of events this year from the annual BioScotland conference to a [community engagement](#) project with First Scotrail to a showcase of expertise from the department of [Civil and Environmental Engineering](#).

As well as all the activity taking place across the campus, a number of events will be held at our off-site facilities including the [Advanced Forming Research Centre](#) (AFRC) and [Power Networks Demonstration Centre](#) (PNDC).

A full programme of events will be made available in March. Please continue to visit the website over the coming weeks as details of all the events will be posted on an ongoing basis.

Alongside the various events there will be the opportunity to visit the annual [Images of Research](#) exhibition throughout the week to get an insight into the research being carried out across the University.



Find out the benefits of Engaging with Strathclyde from previous delegates, organisers and collaborators

# 53 events – Register now!



Engage with Strathclyde

About

**Events in 2014**

Strathclyde's Children

Exhibitions

Images of Research

Member Login

Contact us

Search this site

**THE AWARDS**  
UK Entrepreneurial University  
of the Year 2013/14  
UK University of the Year  
2012/13



[Home](#)

[About Strathclyde](#)

[Studying](#)

[Research](#)

[Campus Life](#)

[Visiting](#)

[A-Z Index](#)

[Contact](#)

[Home](#) > [Cross-Functional Work](#) > [Engage with Strathclyde](#)



## Engage 2014 Calendar

**Mon 28 Apr**

**Tue 29 Apr**

**Wed 30 Apr**

**Thu 1 May**

**Fri 2 May**

### Strathclyde's Children

*Working together to improve the lives of children and young people*

This full day event offering a range of workshops for anyone working in teaching, social work, youth work, residential child care, or an allied health care profession with children and young people or if you have an interest in children and young people's issues.

9:45 am - 3:30 pm

Venue: [Graham Hills](#)

### Celebrating Local Community Involvement in Adopt A Station

*Exhibition*

This event marks the opening of a week-long exhibition of images and information about the 'Adopt a Station' scheme.

10:00 am - 4:00 pm

Venue: [McCance Building](#)

### Images of Research Exhibition

*Strathclyde's Engagements and Collaborations*

An exhibition of compelling images that represents research at Strathclyde which is enhanced by a partnership or collaboration.

10:00 am - 4:00 pm

Venue: [The Collins Gallery](#)



# 3 exhibitions and opening events – Register now!



Engage with Strathclyde  
About  
Events in 2014  
Strathclyde's Children  
Exhibitions  
Images of Research  
Member Login  
Contact us

Search this site

**THE AWARDS**  
UK Entrepreneurial University  
of the Year 2012/13  
UK University of the Year  
2012/13



[Home](#) [About Strathclyde](#) [Studying](#) [Research](#) [Campus Life](#) [Visiting](#) [A-Z Index](#) [Contact](#)

[Home](#) > [Cross-Functional Work](#) > [Engage with Strathclyde](#)



## Exhibitions during Engage with Strathclyde

Engage with Strathclyde 2014 is hosting three exhibitions during the week of events. All are free to attend, please take the opportunity to visit them while you are on campus.

### Adopt a Station



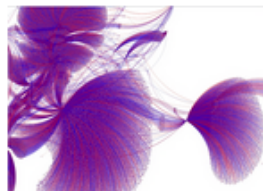
This exhibition visualises the results of a three year project investigating the "Adopt a Station" scheme and how small groups of enthusiastic individuals can positively impact on a wider group of rail customers.

Monday 28 April - Friday 2 May  
(10am - 4pm)

McCance Building ([map](#)).

There is an opening event and afternoon tea on Monday 28 April at 3pm, to attend this event please register via the [Engage with Strathclyde website](#).

### Images of Research



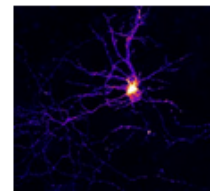
Visit this exciting exhibition to see this year's entries to the University of Strathclyde's annual Images of Research competition. Entrants were challenged to represent their research via an eye-catching image, showcasing the value that partnership with an external organisation or the public can bring.

Monday 28 April - Friday 2 May  
(10am - 4pm)

Collins Building ([map](#)).

There is an opening event on Monday 28 April at 5.30pm, to attend this event please register via the [Engage with Strathclyde website](#).

### Hunting for Answers



This exhibition is the culmination of a micro-residency of ten artists working alongside a group of researchers from Strathclyde Institute of Pharmacy and Biomedical Sciences.

Wednesday 30 April - Friday 2 May  
(10am - 4pm)

Hamnett Wing ([map](#)).

There is an opening event on Tuesday 29 April at 7.00pm, to attend this event please register via the [Engage with Strathclyde website](#).



Engage with Strathclyde

About

**Events in 2014**

Strathclyde's Children

Exhibitions

Images of Research

Member Login

Contact us

Search this site 

**THE AWARDS**  
UK Entrepreneurial University  
of the Year 2013/14  
UK University of the Year  
2012/13



## The Chemistry Clinic

### A cost effective route for small-scale knowledge exchange engagement

**Monday, 28th April 2014 (4:00 pm - 7:00 pm)**

**Venue: Thomas Graham Building**

**Room: Level 3 TG 310**

The Chemistry Clinic is a student-led facility to offer analysis or development work for companies on a small scale. This event will highlight how the clinic can help develop products or answer chemistry questions which a company might need to address. Speakers will include academic partners and students, along with testimonials from previous industrial collaborators. There will be an opportunity for a mini clinic followed by a mixer session - a chance for networking and learning informally about opportunities.

### Who should attend?

This event will discuss opportunities for industry about how they could collaborate with the Chemistry Clinic. Areas of chemistry expertise include:

- Materials and Nanochemistry
- Analytical Chemistry
- Chemical Biology
- Forensic Science

### Benefits of attending

This event will help colleagues from industry identify how the Chemistry Clinic can help develop or analyse current products. It is also an opportunity to learn about how the Clinic has benefitted real life situations and how interactions are developed and formalised with the Chemistry Clinic.

### Thomas Graham Building



[Travel Directions to the University](#)

**Register Now**

*Please note that there will be a photographer at the event and some video footage may be taken. Images and footage will be used for internal publications, websites, and promotion of similar events in the future.*

**Further information**



# Images of Research

Engage with Strathclyde

About

**Events in 2014**

Strathclyde's Children

Exhibitions

Images of Research

Member Login

Contact us

Search this site 

**THE AWARDS**  
UK Entrepreneurial University  
of the Year 2013/14  
UK University of the Year  
2012/13



## Images of Research - Opening Night

**Monday, 28th April 2014 (5:30 pm - 7:00 pm)**

**Venue: The Collins Gallery**

You are invited to attend the launch of the 2014 Images of Research exhibition. Join entrants, colleagues and visitors to the University for a drinks reception and be amongst the first to hear which are the winning and commended entries.

The event host, Professor Sir Jim McDonald, will be joined by the panel of competition judges to make the announcement and open the public vote for the overall winner. This year's judges are Paul Manners (Director of the National Co-ordinating Centre for Public Engagement), Heather Reid OBE (meteorologist and former television weather presenter for BBC Scotland), Margaret McGarry (University Court Member) and Ray McGuff (Head of Media and Corporate Communications).

This year's competition challenged the research community to consider the value their collaborations and partnerships bring to their research, reflecting the University's research focus on a local, national and international scale.

### Who should attend?

- Images of Research 2014 competition entrants
- Representatives from partner organisations contributing to research at the University
- Delegates attending Engage with

### Benefits of attending

- An opportunity to be amongst the first to view this year's exhibition
- To find out which are the category winners and hear commendations by the judging panel
- Public visiting space and cost your

### The Collins Gallery



[Travel Directions to the University](#)

**Register Now**

*Please note that there will be a photographer at the event and some video footage may be taken. Images and footage will be used for internal publications, websites, and promotion of similar events in the future.*

### Working for you

Find out how [businesses and organisations](#) can take



Engage with Strathclyde

About

**Events in 2014**

Strathclyde's Children

Exhibitions

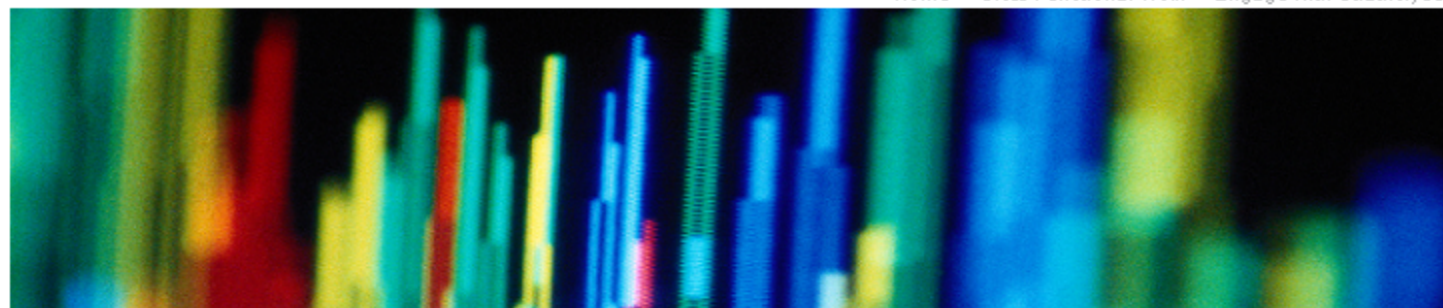
Images of Research

Member Login

Contact us

Search this site 

**THE AWARDS**  
UK Entrepreneurial University  
of the Year 2013/14  
UK University of the Year  
2012/13



## BioScotland 2014 Life Sciences Partnering Event at Strathclyde

**Tuesday, 29th April 2014 (9:15 am - 6:30 pm)**

**Venue: Barony Hall**

**BioScotland 2014** is a one-day event giving you the opportunity to develop new business contacts with people, companies and organisations operating in life sciences research.

Following scene setting plenary speakers, you will then conduct your pre-arranged 1-2-1 partnering meetings and take part in chosen workshop sessions or facility tours. There will be adequate time for networking around our exhibition space and at the drinks reception.

The delegate registration fee from the 1st March will be £70. (Please note that there is no VAT this year)

University employees will be able to attend the presentation sessions, exhibition and workshop at no charge. Those wishing to take advantage of this offer should email their name and contact details to [meghan.hughes@strath.ac.uk](mailto:meghan.hughes@strath.ac.uk).

### Who should attend?

The event will bring together industry and academic professionals together with support service providers from local, national and international biotech

### Benefits of attending

- Hear about opportunities and issues facing the growth of bio-related business sectors in Scotland

#### Barony Hall



[Travel Directions to the University](#)

**Register now** »

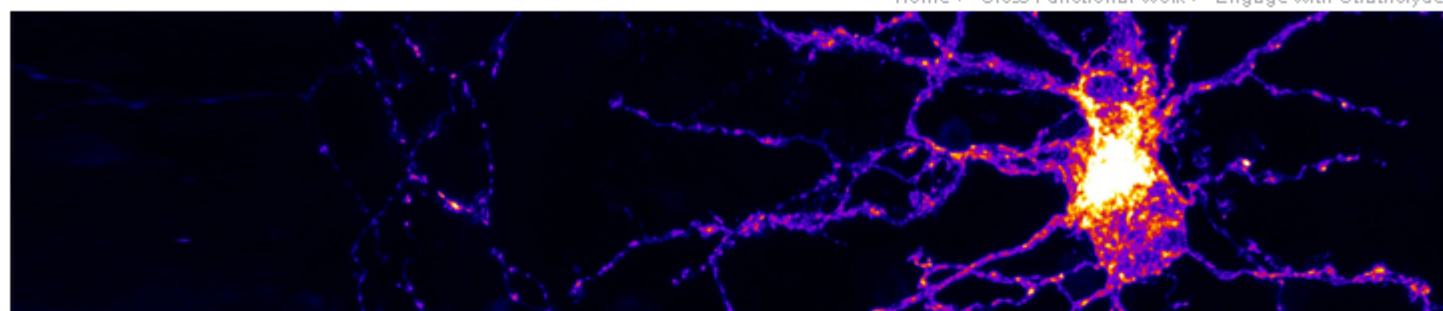
*Please note that there will be a photographer at the event and some video footage may be taken. Images and footage will be used for internal publications, websites, and promotion of similar events in the future.*

**Further information**



[Engage with Strathclyde](#)[About](#)[Events in 2014](#)[Strathclyde's Children](#)[Exhibitions](#)[Images of Research](#)[Member Login](#)[Contact us](#)

**THE AWARDS**  
UK Entrepreneurial University  
of the Year 2013/14  
UK University of the Year  
2012/13



## Hunting for Answers Exhibition - Opening Night

**Tuesday, 29th April 2014 (7:00 pm - 8:30 pm)**

**Venue: SIPBS Hamnett Wing**

Engage with Strathclyde presents an eclectic art exhibition by ten artists using a variety of media to express their understanding of the research conducted at the Strathclyde Institute of Pharmacy and Biomedical Sciences (SIPBS), with a particular emphasis on Huntington's disease.

This event is the opening night of the exhibition, a culmination of a micro-residency undertaken by the artists, coordinated by [ASCUS Art Science Collaborative](#) in collaboration with the [Chamberlain lab](#) (SIPBS). For more information about the ASCUS Chamberlain Micro-Residency 2014 please see visit the [website](#).

Register for this event to hear more about the collaboration, meet the artists and researchers involved and learn more about the research taking place at the University.

### Who should attend?

Everyone is welcome to attend this exhibition

### Benefits of attending

- An opportunity to engage with ten artists all of whom have explored the fundamental questions that scientific research faces, and who are presenting their understanding in this unique exhibition.
- Find out more about the research

### SIPBS Hamnett Wing



[Travel Directions to the University](#)

**Register Now**

*Please note that there will be a photographer at the event and some video footage may be taken. Images and footage will be used for internal publications, websites, and promotion of similar events in the future.*

### Further information



[Flyer](#)

Engage with Strathclyde

About

**Events in 2014**

Strathclyde's Children

Exhibitions

Images of Research

Member Login

Contact us

Search this site 

**THE AWARDS**  
UK Entrepreneurial University  
of the Year 2013/14  
UK University of the Year  
2012/13



## Allosteric Drug Design

**Wednesday, 30th April 2014 (11:00 am - 1:00 pm)**

**Venue: SIPBS Hamnett Wing**

**Room: HW111-114**

This event aims to bring together academic and industrial researchers with interest in allosteric drug design and development with a view to identifying collaborative and funding opportunities.

[Dr. Gerard JP van Westen](#) (EBI-ChEMBL), [Professor Leonardo Scapozza](#) (University of Geneva) and [Dr. Laurent Galibert](#) (Alpine Institute for Drug Discovery) will present work covering various aspects of drug design in relation to allosteric targets to set the scene.

*There will also be an opportunity to meet the speakers and network around a buffet lunch following the talks.*

### Who should attend?

- Academic or industrial researchers in the area of drug discovery and development with an interest in allostery.
- Staff and students with an interest in drug design and development

### Benefits of attending

- Hear about the work of Professor Scapozza and his group at University of Geneva
- Hear about the work of Dr Gerard JP van Westen
- Hear about the platform technology

### SIPBS Hamnett Wing



[Travel Directions to the University](#)

**Register Now**

*Please note that there will be a photographer at the event and some video footage may be taken. Images and footage will be used for internal publications, websites, and promotion of similar events in the future.*

### Further information



[Flyer](#)

Engage with Strathclyde

About

**Events in 2014**

Strathclyde's Children

Exhibitions

Images of Research

Member Login

Contact us

Search this site 

**THE AWARDS**  
UK Entrepreneurial University  
of the Year 2013/14  
UK University of the Year  
2012/13



## How Can Engaging with Universities Help SMEs to Innovate? An Event Run by Strathclyde Institute for Operations Management and CEED

**Thursday, 1st May 2014 (5:00 pm - 7:30 pm)**

**Venue: James Weir, Level 7**

**Room: DMEM Studio**

The aim of this event is to bring together representatives from small to medium sized enterprises (SMEs), academics, and organisations involved in stimulating innovation, to examine how engaging with universities can help SMEs to become more competitive. The event will be hosted by Dr Jill MacBryde, Vice-Dean of Strathclyde Business School who will introduce some local SMEs who have benefited from collaborating with the University of Strathclyde.

Gill Gray and Scott Sinclair from the Centre for Engineering Education and Development (Ceed) will introduce the Growth500 programme which aims to support SMEs who are keen to grow.

There will also be an opportunity to find out about funding mechanisms that may be available to help collaboration between SMEs and universities.

### Who should attend?

This event is targeted at business leaders from small to medium sized enterprises (up to 250 employees) who

### Benefits of attending

Hear first-hand experiences of smaller companies who have worked with universities to become more

### James Weir, Level 7



[Travel Directions to the University](#)

**Register Now**

*Please note that there will be a photographer at the event and some video footage may be taken. Images and footage will be used for internal publications, websites, and promotion of similar events in the future.*

### Working for you

Find out how businesses



Engage with Strathclyde

About

**Events in 2014**

Strathclyde's Children

Exhibitions

Images of Research

Member Area

Contact us

Logout

Search this site 

**THE AWARDS**  
UK Entrepreneurial University  
of the Year 2013/14  
UK University of the Year  
2012/13



## Strathclyde's Children

**Working together to improve the lives of children and young people**

**Monday, 28th April 2014 (9:45 am - 3:30 pm)**

**Venue: Graham Hills**

**Room: 5.14**

Research expertise in the Faculty of Humanities and Social Sciences contributes towards developing a better understanding of the challenges in educating, protecting and empowering children and young people.

This full day event offers you a range of workshops to tailor your day at the University of Strathclyde to suit the interests of your organisation. Whether you work in teaching, social work, youth work, residential child care, or an allied health care profession with children and young people or if you have an interest in children and young people's issues, we have an exciting programme of free events for you.

To find out more about individual workshops, the full programme can be downloaded [here](#).

### Programme

- |               |   |
|---------------|---|
| 9.45 - 10.15  | Registration and Coffee   |
| 10.15 - 10.30 | Welcome   |
| 10.30 - 11.15 | Inter-professional Working and the Children and Young People's Bill |

*Andrew Kendrick, Claire Cassidy and John Paul Fitzpatrick*

### Graham Hills



[Travel Directions to the University](#)

**Register Now**

*Please note that there will be a photographer at the event and some video footage may be taken. Images and footage will be used for internal publications, websites, and promotion of similar events in the future.*

### Working for you

Find out how businesses

Engage with Strathclyde

About

**Events in 2014**

Strathclyde's Children

Exhibitions

Images of Research

Member Area

Contact us

Logout

Search this site 

**THE AWARDS**  
UK Entrepreneurial University  
of the Year 2013/14  
UK University of the Year  
2012/13



## Celebrating Local Community Involvement in Adopt A Station - Opening Event

**Monday, 28th April 2014 (3:00 pm - 4:30 pm)**

**Venue: McCance Building**

**Room: Foyer**

This event marks the opening of a week-long exhibition of images and information about the 'Adopt a Station' scheme which operates as a partnership between First ScotRail and individuals or groups. The scheme allows communities to utilise and enhance space within their local railway station in order to provide services or improvements to benefit the community.

The exhibition visualises the results of a three year academic project investigating the 'Adopt a Station' scheme and how small groups of enthusiastic and motivated individuals can positively impact on a wider group of rail customers.

Register for this event to find out more about the Scheme and network with ScotRail and Association for Community Rail representatives and community groups involved with the scheme. It is also an opportunity to be amongst the first to see the exhibition. Afternoon tea will be provided.

### Who should attend?

- Individuals, community groups and Scotrail representatives involved in the ScotRail 'Adopt a Station' project

### Benefits of attending

- See the exhibition of images and information generated by the project

#### McCance Building



[Travel Directions to the University](#)

**Register Now**

*Please note that there will be a photographer at the event and some video footage may be taken. Images and footage will be used for internal publications, websites, and promotion of similar events in the future.*

**Further information**



# Hunting for Answers

An interdisciplinary art exhibition



# Adopt a Station Exhibition



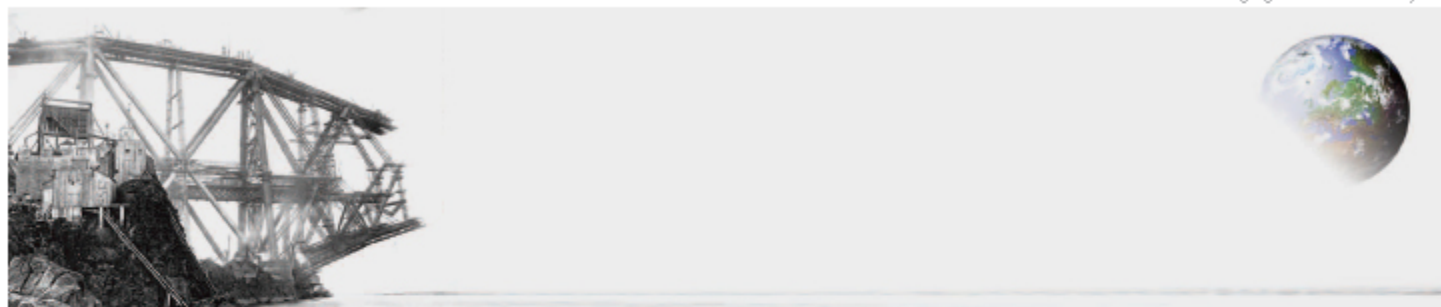




# Images of Research Exhibition

[Engage with Strathclyde](#)[About](#)[Events in 2014](#)[Strathclyde's Children](#)[Exhibitions](#)[Images of Research](#)[Member Area](#)[Contact us](#)[Logout](#)

**THE AWARDS**  
UK Entrepreneurial University  
of the Year 2013/14  
UK University of the Year  
2012/13



## Sustainable Engineering Annual Group Project Conference Faculty of Engineering

**Tuesday, 29th April 2014 (9:00 am - 1:00 pm)**

**Venue: Collins Building**

**Room: Court Senate**

**Renewable Energy Systems and the Environment**

**Offshore Renewable Energy**

The University of Strathclyde's Faculty of Engineering has run the ground-breaking Sustainable Engineering programme since 1999. It combines study in specialist, advanced engineering technologies underpinned with training in sustainability. The programme examines sustainable concepts through industry-relevant group projects.

This event brings together industrial project supervisors, company representatives, academic tutors and students, providing an opportunity to share the outcomes of project work through sustainably focused solutions to industrial problems. The projects to be presented have an emphasis on renewable energy and students involved are from MSc courses in "Renewable Energy Systems and the Environment", and "Offshore Renewable Energy".

In addition to presentations from the participating groups there will be networking opportunities during the event.

### Collins Building



[Travel Directions to the University](#)

**Register Now**

*Please note that there will be a photographer at the event and some video footage may be taken. Images and footage will be used for internal publications, websites, and promotion of similar events in the future.*





## Power Systems CPD Workforce skills training in the Power Sector

**Tuesday, 29th April 2014 (11:00 am - 3:00 pm)**

**Venue: Royal College Building**

**Room: 215**

The UK and international power sector is wrestling with the demands of a low carbon economy, an aging infrastructure, increasing renewables integration and new technology developments such as smart grid and HVDC.

Continuous Professional Development (CPD) and lifelong learning can play a critical role in helping the power sector face up to these challenges and develop a skilled and flexible workforce. This event will highlight the range of power-focused CPD courses currently available to industry, the delivery methods used (e.g. class-based learning, labs, online modules), and run a short course demonstration session. A break-out workshop will also offer industry attendees an opportunity to share details of their current and future training needs with staff in the Faculty of Engineering.

Note: a buffet lunch will be provided.

### Who should attend?

- Utility company training managers
- Department engineering managers
- Power sector consultancies

### Benefits of attending

- Insight into current power CPD courses available from the Faculty of Engineering at the University of Strathclyde

### Royal College Building



[Travel Directions to the University](#)

**Register Now**

*Please note that there will be a photographer at the event and some video footage may be taken. Images and footage will be used for internal publications, websites, and promotion of similar events in the future.*

**Further information**



Engage with Strathclyde

About

**Events in 2014**

Strathclyde's Children

Exhibitions

Images of Research

Member Area

Contact us

Logout

Search this site 

**THE AWARDS**  
UK Entrepreneurial University  
of the Year 2013/14  
UK University of the Year  
2012/13



## Autism Network Scotland - Education Network Autism Toolbox Twilight Session

**Tuesday, 29th April 2014 (5:00 pm - 6:00 pm)**

**Venue: Collins Building**

**Room: Scottish Universities Insight**

April is Autism Awareness month and Autism Network Scotland (ANS) invites you to find out more about their role in implementing the Scottish National Strategy for Autism and the launch of the Autism Toolbox website resource.

In 2013 as part of the Scottish Strategy for Autism, the Government awarded funding for the development of Toolbox into a national website resource. The event will feature an interactive presentation of the new Autism Toolbox to coincide with its official national launch on the 29th of April.

Join us for an early evening practical session to see how this resource could work for you, to get involved in knowledge exchange and discussion, as well as the opportunity to network with fellow practitioners.

**You are invited to join us ahead of the event, light refreshments will be provided from 4.30pm.**

### Collins Building



[Travel Directions to the University](#)

**Register Now**

*Please note that there will be a photographer at the event and some video footage may be taken. Images and footage will be used for internal publications, websites, and promotion of*

Engage with Strathclyde

About

**Events in 2014**

Strathclyde's Children

Exhibitions

Images of Research

Member Area

Contact us

Logout

Search this site 

**THE AWARDS**  
UK Entrepreneurial University  
of the Year 2013/14  
UK University of the Year  
2012/13



## Strathclyde Space Institute Symposium

**Wednesday, 30th April 2014 (8:45 am - 4:30 pm)**

**Venue: Collins Building**

**Room: Court Senate**

The Strathclyde Space Institute Symposium is a one day event designed to engage with current and future collaborators from academia, government and industry. The event will provide insights into current research programmes and an opportunity to influence our thinking for the future.

The symposium will run as four sessions of talks, with poster sessions during coffee and lunch breaks. The event will showcase the Strathclyde Space Institute with one session each from the Advanced Space Concepts Laboratory; the Centre for Future Air-Space Transport Technology; the Space Mechatronics Systems Technology Laboratory; and the Centre for Space Science and Applications.

### Who should attend?

- Current and potential future collaborators from academia, government and industry
- Members of research groups that comprise the Strathclyde Space Institute

### Benefits of attending

- Engage with current collaborators from academia, government and industry
- Seek new collaborators from academia, government and industry
- Present institutional space research to an invited industrial advisory board

### Collins Building



[Travel Directions to the University](#)

**Register Now**

*Please note that there will be a photographer at the event and some video footage may be taken. Images and footage will be used for internal publications, websites, and promotion of similar events in the future.*

### Further information



[Flyer](#)



[Programme](#)



Engage with Strathclyde

About

**Events in 2014**

Strathclyde's Children

Exhibitions

Images of Research

Member Area

Contact us

Logout

Search this site 

**THE AWARDS**  
UK Entrepreneurial University  
of the Year 2013/14  
UK University of the Year  
2012/13



## Advanced Manufacturing Technologies at Strathclyde

**Wednesday, 30th April 2014 (10:00 am - 1:00 pm)**

**Venue: Advanced Forming Research Centre**

This event will showcase the leading research and knowledge exchange work being done in Manufacturing Technologies at the University of Strathclyde. The event will be hosted at the Advanced Forming Research Centre (AFRC) where the University of Strathclyde is working with industry to develop new manufacturing capabilities in forging and forming. The event will showcase the new phase 2 of the building and the range of research into manufacturing technology that is being carried out from the very small micro and nano-manufacture to the very large rotary forging.

**Registration from 9.45am at the AFRC with the event starting at 10am.**

*For those requiring transport to AFRC and return to city centre, a bus will depart from outside of 50 George Street (Graham Hills Building) at 9.15am. Please indicate if you wish to use this service when registering.*

This event is one of three run by DMEM - see also our [half-day event on product design and manufacturing management](#) and our [industry project presentations](#).

### Who should attend?

This event is targeted at scientists, engineers, researchers, manufacturing technologists, mechanical engineers and business leaders from all sizes of organisations and students with an

### Benefits of attending

You will gain an overview of the leading research and knowledge exchange work we are doing at the University of Strathclyde in the field of manufacturing technology. You will get

### Advanced Forming Research Centre



Bus pickup point:



**Register Now**

*Please note that there will be a photographer at the event and*



## Showcasing Projects With Industry

**Wednesday, 30th April 2014 (2:00 pm - 4:00 pm)**

**Venue: James Weir Building**

**Room: Level 5 Knowledge Exchange Hub**

It is beneficial for industry and students to collaborate in industrially-relevant projects. This poster presentation and networking event provides an opportunity to share the outcomes of collaborative work with industry. Thirty eight projects will be on show including SME carbon audits, treatment of land contamination, wildlife management and hydrogeology projects overseas. Posters relate to the work of nine different programmes: MEng Civil Engineering; MRes Integrated Pollution Prevention and Control; MSc Applied Economics; MSc Environmental Engineering; MSc Environmental Entrepreneurship; MSc Hydrogeology; MSc Sustainability and Environmental Studies; MSc Wind Energy Systems, and PhD programme. Attendees will vote for the best project and poster.

### Who should attend?

- Companies currently working with students on client-based projects
- Companies interested in working with the University
- Staff who already contribute to the programme

### Benefits of attending

- Learn what collaborative work the University can offer your company
- Discuss carbon audits, treatment of land contamination, wildlife management and hydrogeology projects

### James Weir Building



[Travel Directions to the University](#)

**Register Now**

*Please note that there will be a photographer at the event and some video footage may be taken. Images and footage will be used for internal publications, websites, and promotion of similar events in the future.*

### Further information



Engage with Strathclyde

About

**Events in 2014**

Strathclyde's Children

Exhibitions

Images of Research

Member Area

Contact us

Logout

Search this site 

**THE AWARDS**  
UK Entrepreneurial University  
of the Year 2013/14  
UK University of the Year  
2012/13



## Knowledge Exchange Open Evening

**Wednesday, 30th April 2014 (4:30 pm - 6:00 pm)**

**Venue: Lord Hope Building**

**Room: 226**

Research clearly outlines the importance of CPD in offering opportunities for practitioners to discuss current education policies and innovations with others in the field and with researchers and other university staff.

The School of Education has a long history and an excellent reputation in both research and teaching and can offer a wide range of knowledge exchange courses.

Models of Knowledge Exchange will be explored in order to create individual programmes to meet the needs of local authorities, schools and school communities to ensure maximum impact on learners' needs.

### Draft Programme:

- 1630 – 1640 Introduction

*Donald Christie, Head of School of Education*

- 1640 – 1700 Literacy Clinic

*Sue Ellis, School of Education*

### Lord Hope Building



[Travel Directions to the University](#)

**Register Now**

*Please note that there will be a photographer at the event and some video footage may be taken. Images and footage will be used for internal publications, websites, and promotion of similar events in the future.*

### Working for you

Find out how [businesses](#)



Engage with Strathclyde

About

**Events in 2014**

Strathclyde's Children

Exhibitions

Images of Research

Member Area

Contact us

Logout

Search this site 

**THE AWARDS**  
UK Entrepreneurial University  
of the Year 2013/14  
UK University of the Year  
2012/13



## Power Networks Demonstration Centre Showcase and "Speed Workshop"

**Thursday, 1st May 2014 (10:30 am - 2:30 pm)**

**Venue: Power Networks Demonstration Centre**

The Power Networks Demonstration Centre (PNDC) is a new facility designed to accelerate the development, testing, demonstration and deployment of innovative technologies for future energy networks. This event will be of interest to network operators, equipment manufacturers and others in the industry who are involved in developing, demonstrating and testing novel and innovative technologies. At this event an overview will be provided of the centre facilities, briefings from existing industry users, as well as a tour of the centre, will be conducted. A focussed and facilitated workshop will be held after lunch, during which you can explore how the centre may be able to help in meeting your company objectives.

Transport is available from the University of Strathclyde city centre campus to the Power Networks Demonstration Centre. A bus will leave from outside the Graham Hills Building at 50 George Street at 9:30am and return to the city centre after the event.

Please indicate whether you wish to use this bus service when you register. Parking is also available at the centre if you are driving.

### Power Networks Demonstration Centre



Bus pickup point:



Engage with Strathclyde

About

**Events in 2014**

Strathclyde's Children

Exhibitions

Images of Research

Member Area

Contact us

Logout

Search this site



**THE AWARDS**  
UK Entrepreneurial University  
of the Year 2013/14  
UK University of the Year  
2012/13



## Digital Literacies For Living, Learning and Working in a Changing Society

**Thursday, 1st May 2014 (1:30 pm - 2:30 pm)**

**Venue: Lord Hope Building**

**Room: LH229a/b**

The so called Digital Economy is currently a main topic in regional, national and international government agendas, as digital technologies are changing, and also challenging the way individuals work, socialise, bank and shop. These innovations inevitably impact on all levels of education, and as a result a new set of skills and competences are needed to prepare individuals for the demands of a society gone digital.

This event will explore the theme of digital literacies – the ability to effectively use the web to search, retrieve, and create information, network, and engage in communal learning – in relation to different levels of education. For instance, it will make links with the four capacities proposed by the Curriculum for Excellence. It will also discuss digital literacies in the contexts of Higher and Further Education, professional development and lifelong learning.

The event aims to be interactive and attendees are welcome to bring their own devices to experience first-hand some of the practices and approaches discussed during this session.



### Lord Hope Building



[Travel Directions to the University](#)

**Register Now**

*Please note that there will be a photographer at the event and some video footage may be taken. Images and footage will be used for internal publications, websites, and promotion of similar events in the future.*

Engage with Strathclyde

About

**Events in 2014**

Strathclyde's Children

Exhibitions

Images of Research

Member Area

Contact us

Logout

Search this site 

**THE AWARDS**  
UK Entrepreneurial University  
of the Year 2013/14  
UK University of the Year  
2012/13



## Co-production in Community Contexts

**Friday, 2nd May 2014 (9:30 am - 12:30 pm)**

**Venue: Lord Hope Building**

**Room: 226 & 227**

This event will explore the concept of co-production – a major priority in EU social policy - across a number of social care issues. It will explore ideas underpinning co-production, its key characteristics and a critical exploration of how these ideas can be applied in practice.

Through an exchange of ideas and experiences we can learn from each other how co-production can be applied across different settings and how barriers to its implementation would be negotiated. This event is intended to mark the beginning of a conversation about how we can work together to develop co-productive, evidence-based practices.

### Who should attend?

- Social work, health practitioners and managers
- Third sector organisations

### Benefits of attending

- Establish links and share ideas on co-production
- To identify how co-production can

### Lord Hope Building



[Travel Directions to the University](#)

**Register Now**

*Please note that there will be a photographer at the event and some video footage may be taken. Images and footage will be used for internal publications, websites, and promotion of similar events in the future.*

# Engage with Strathclyde



***28 April – 2 May  
Events in 2014***

[www.strath.ac.uk/engage](http://www.strath.ac.uk/engage)

#StrathEngage