

Delivering Research Impact

For Humanities and Social Science

Outline

- Context
- Three Factors in Humanities Knowledge Transfer
 - Use disciplinary *Methods & Approach*, not just content
 - *Cycles of Engagement*, rather than ladders or hierarchies
 - *Human Experience* is essential for creative technologies
- Implications for KT Support in Universities

Context for industry collaboration in humanities

- Growth of devolved and specialist funding
 - AHRC Knowledge Exchange Hubs, 4 x £5m, 2012-16
 - Impact Acceleration Accounts
 - Brighton Fuse, Creative Exchange Wales Network
 - Technology Strategy Board, NESTA, EU – FP7, ERDF
 - Clusters of expertise and new companies
 - Policy-facing units & institutes
 - PolicyBristol, LSE Impact Blog, Manchester KE Trial Workshops
-

Methods and approach, not content

- REACT Hub projects
- Reflecting the past, REACT,
 - www.react-hub.org.uk/heritagesandbox/projects/2012/reflecting-the-past/
- Ghosts in the Garden, REACT
 - <http://vimeo.com/60239838>
- Quipu
 - <http://www.react-hub.org.uk/future-doc-sandbox/projects/2013/quipu/>



[Search](#)[Read our Blog](#)[Feedback](#) ↗

◀ prev next ▶

Who, where, exactly when?

Nationalist politician and diplomat Fu Bingchang photographed numerous political rallies. Here, Comintern agent Mikhail Borodin joins Chiang Kai-shek, Wang Jingwei, Sun Yat-sen's widow, Soong Ching-ling, and others. Can you help us precisely date this and identify those portrayed? Our images are wide in range and subject and we often have no clues about them. We are always keen to receive suggestions.

Featured photo set: Shanghai on the move



Bringing Chinese history to life...

Visualising China is a [JISC](#)-funded project to allow users to explore and enhance more than 8000 digitised images of photographs of China taken between 1850 and 1950. It allows access to many previously unseen albums, envelopes and private collections and also major collections such as [Historical Photographs of China](#), the [Sir Robert Hart Collection](#) and [Joseph Needham's Photographs of Wartime China](#). These have many sub-collections and albums. We hope you will contribute by using your knowledge to comment on or annotate these images.

[Read more](#) about Visualising China.

Latest from the blog

Mon, 17 Mar 2014 16:52:04 +0000

[Dancing in Peking on St Patrick's day](#)



Methods and approach, not content

- Know Your Bristol 2012-13
 - ‘Community history layers’ to City Council’s online interactive map, [*Know Your Place*](#)
 - Events co-designed with residents’ groups
 - Explore, research and co-create Bristol history and culture
- Know Your Bristol on the Move 2013-15
 - New models tailored to place, culture, politics, age, nationality
 - Digital tools, arts, craft, 3D printing, film-making

Hierarchies of engagement

- Technology Readiness Levels
- An 'escalator' of tools and funding mechanisms
- NCUB's Best Practice guide
- Northern Rock Foundation's grant making guide
- Cycles of Co-Production and Impact

TRL 9

- Actual system “flight proven” through successful mission operations

TRL 8

- Actual system completed and “flight qualified” through test and demonstration (ground or space)

TRL 7

- System prototype demonstration in a space environment

TRL 6

- System/subsystem model or prototype demonstration in a relevant environment (ground or space)

TRL 5

- Component and/or breadboard validation in relevant environment

TRL 4

- Component and/or breadboard validation in laboratory environment

TRL 3

- Analytical and experimental critical function and/or characteristic proof-of-concept

TRL 2

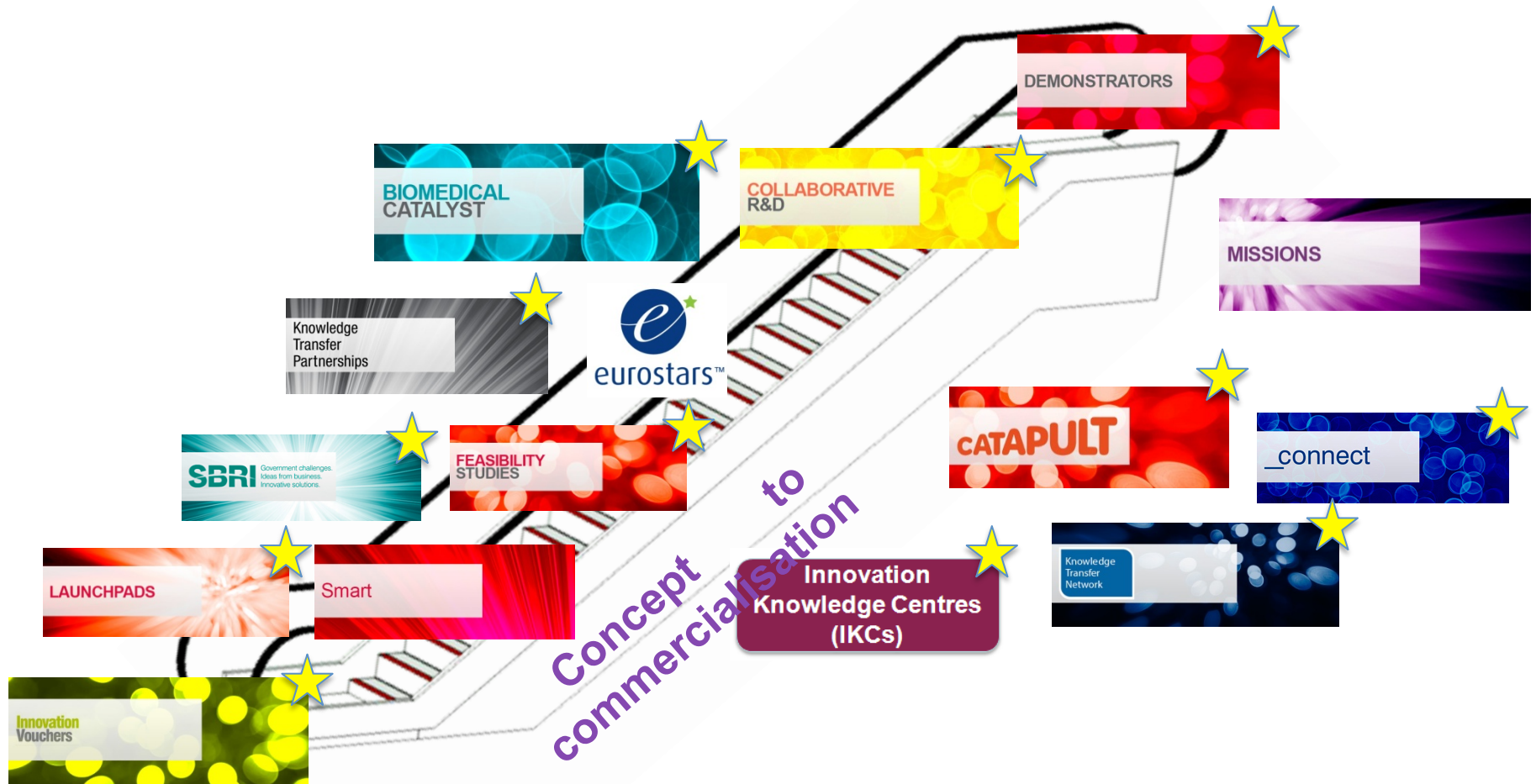
- Technology concept and/or application formulated

TRL 1

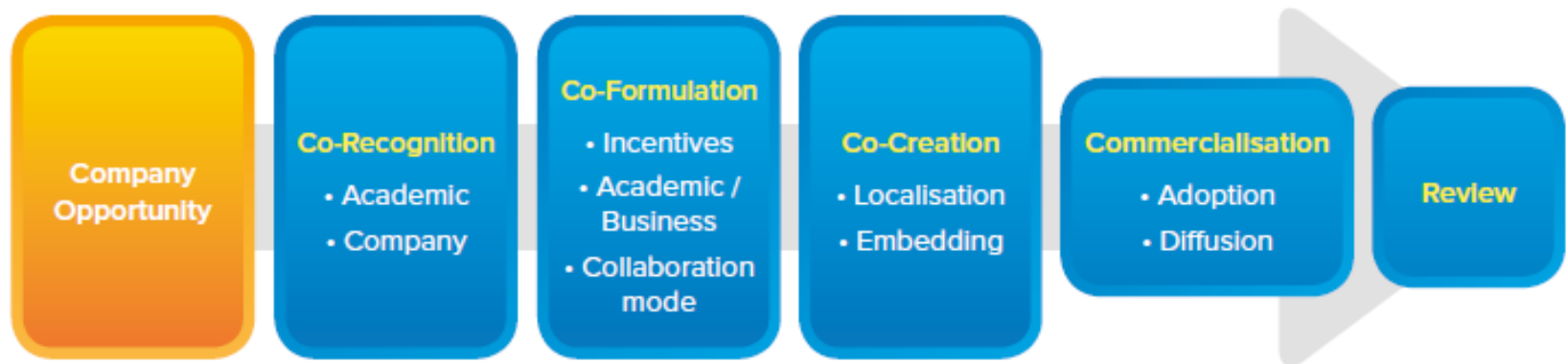
- Basic principles observed and reported

TSB supports a range of tools

★ = academic involvement



Best Practice Strategies for Successful Innovation through University-Business Collaboration



National Centre for Universities and Business (UK), 2013

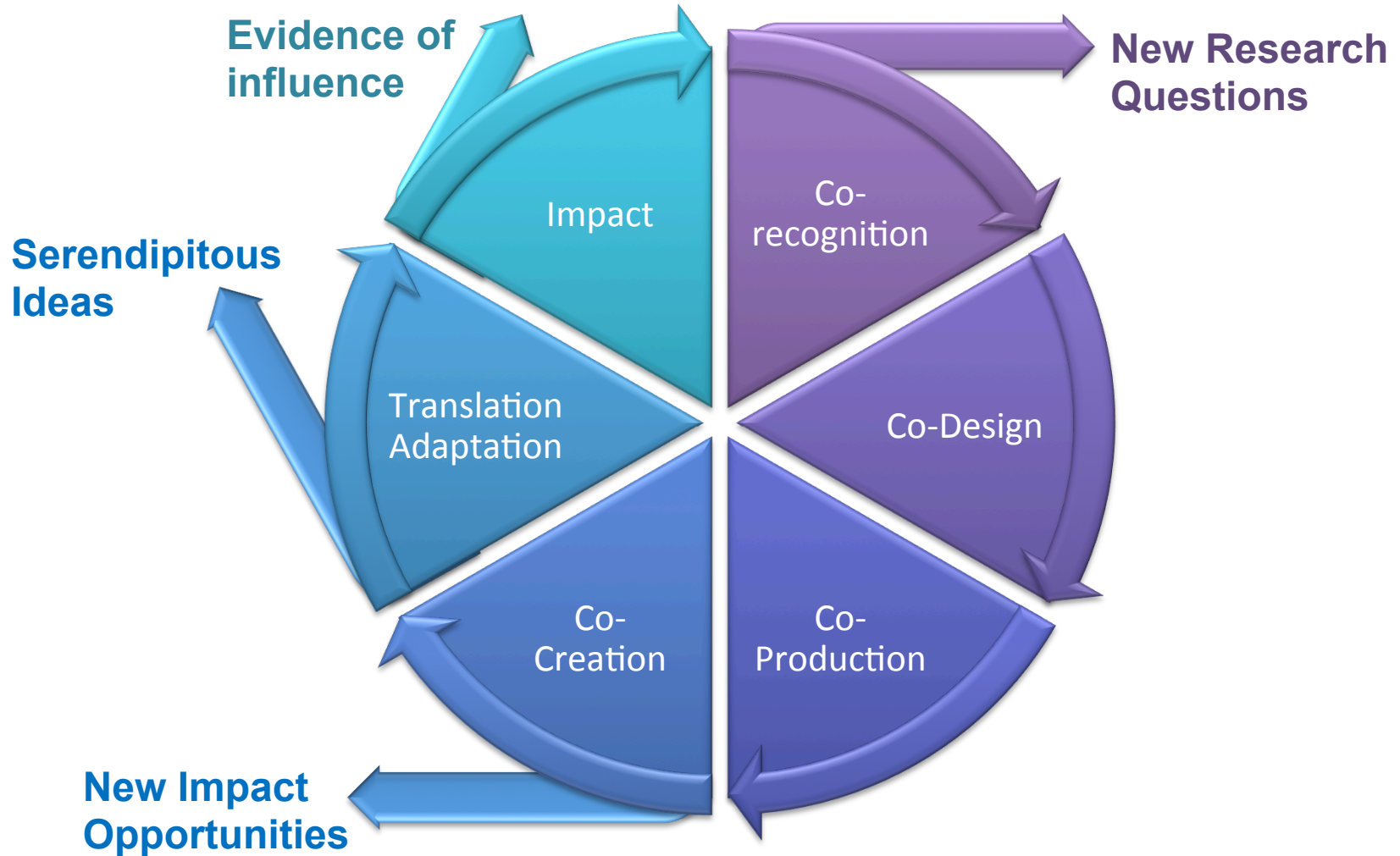
Northern Rock Foundation



Adding value to Grant-making
Toolkit to help Charitable Trusts
create the widest impact possible
from their investments in
research and grant-making

Co Production and Impact

June 4, 2014



Cycles of Engagement

- Shared recognition of issues and co-design of research (Inputs)
 - Co-production of projects (Activities)
 - ...leads to co-creation and ownership of results (Outputs)
 - Openness to ideas for new projects and serendipity – spin offs
 - Commitment to adapt & use results (Outcomes)
 - ...and to make a practical difference (Impact)
 - Cycle round into further projects, improvements, collaboration
 - Openness to new research ideas – academic or community-led spin offs
-



80 things to
do in Bristol
before
you're 18!

[Home](#)[See all 80](#)[Getting started](#)[Resources](#)[About 80by18](#)

Welcome to the best 80 things to do in Bristol before you're 18!

The people of Bristol have chosen 80 things to do across the city that aren't just fun and free but will help you change the world, face the future and improve your life. Can you do all 80?

HIGHLIGHTS!

[Prepare to save a
life](#)

Survive &
thrive

[See the Bristol
Peregrines](#)

Slow down

[Become a
Bristolian
wordsmith](#)

Do it
ourselves

Let's get
started!

Let's Go!

[See all 80 things](#)

Human experience and technology

- Jekyll 2.0
 - Using participants' bio-data to shape a pervasive media adaptation of Robert Louis Stevenson's Jekyll and Hyde – a reclamation of the novel's transgressive power and a reframing of its central themes for the age of the bio-hacker.
- <http://vimeo.com/65236882>

June 4, 2014



Projects 2013

Produced by iShed as part of the Sandbox Programme

Home

News

Projects

About

- The Theme
- What you get
- Apply
- Events
- FAQ
- Background
- Advisors

Press

- Press Coverage

Join the REACT Hub Mailing list

Name:

Email:

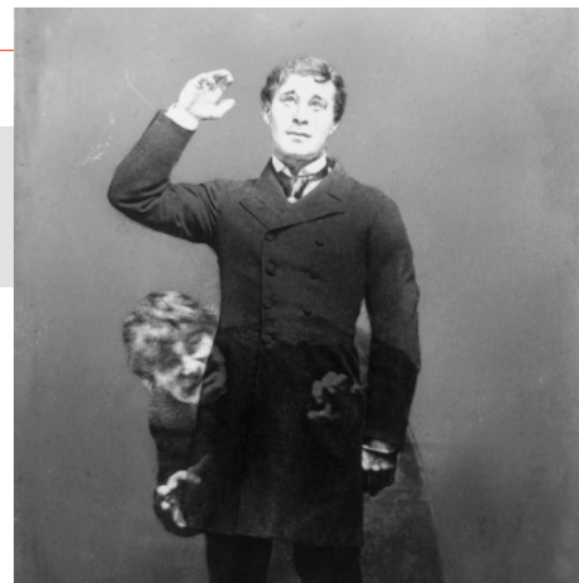
Subscribe



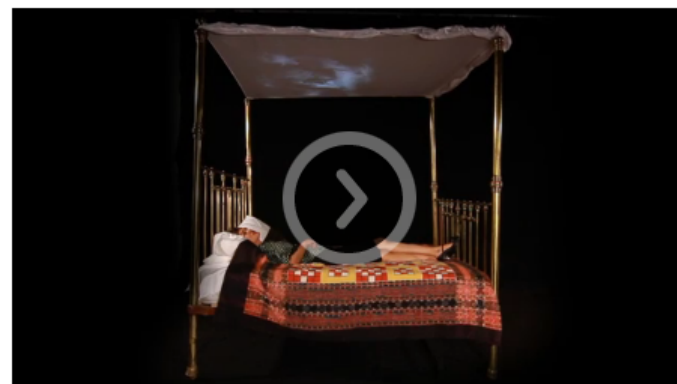
Follow us on twitter @reacthub

Jekyll 2.0

What makes us human? Do our minds control our bodies or are we compelled by urges, compulsions and appetites? When gothic novels were first written, their pace and content were designed to raise heart beats and send shivers down the spine. Games company SlingShot and Anthony Mandal of Cardiff University are setting out to find the contemporary equivalent to the phantasmagoric form. Using participants' bio-data to shape the experience, Jekyll 2.0 is a pervasive media adaptation of Robert Louis Stevenson's Jekyll and Hyde – a reclamation of the novel's transgressive power and a reframing of its central themes for the age of the bio-hacker.



Jekyll and Hyde



Journal Entries

Project Partners

[Anthony Mandal](#) is Senior Lecturer in English Literature, Cardiff University.

Simon Evans is Director of pervasive games company [SlingShot](#).

James Wheale is a poet and Junior Creative at SlingShot.

Implications for KT support

- Develop new models of sandpits & workshops
 - Adapting 'Open Space' methods
 - REACT's Ideas Workshops
 - Dundee's Chiasma
 - Provide support to develop and design projects, as well as for the application processes
 - Importance of producer / project manager roles
-

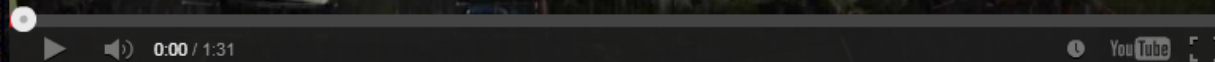
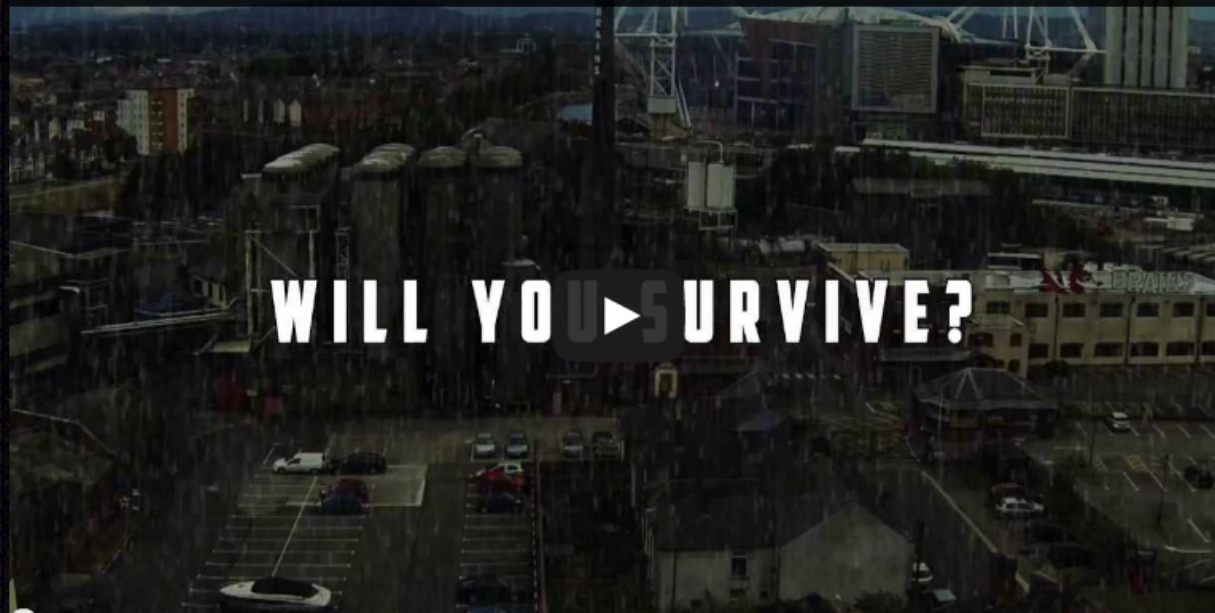
Implications for KT support

- Value intangible benefits
 - In kind contributions to future projects
 - Influence on future thinking, in academia
 - Influence on practice in business, art, public sector
 - Support specialist staff
 - Learning by doing
 - Gaining experience in humanities & social science KT
-

THE CITY WIDE ZOMBIE CHASE GAME



2.8 Hours Later: Asylum OFFICIAL TRAILER



Thank you for listening

Any questions?